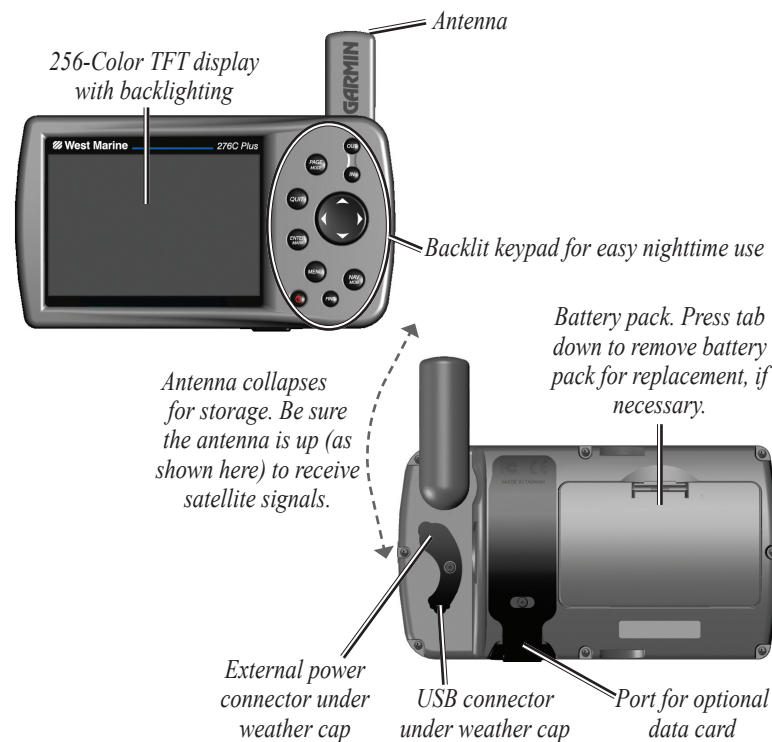


276C Plus Quick Reference Guide



- Zooms in.
- Zooms out.
- Cycles through the main pages in sequence and exits pages. Press and hold to switch modes.
- Cycles through the main pages in reverse sequence, reverts to the previous value in a data entry field, or cancels an unintended function.
- Selects a highlighted option, initiates entry, and then accepts the selected value(s). Press and hold to mark a waypoint.
- Displays options menu for the current page. Press twice to display the Main Menu.
- Displays the Navigation Menu window. In Marine Mode, press and hold to activate the Man Overboard (MOB) function. In Automotive Mode, press and hold to display the Next Turn page and to have the voice prompt announce the next turn.
- Displays the Find Menu.
- Press and hold to turn the unit on and off. Briefly press and release to adjust the backlighting and external speaker volume.
- Selects menu options, enters data, and pans the arrow on the Map page.

Your 276C Plus provides four usage modes. You can use the mode that best suits your need at the time and then switch modes when your needs change.

Powerboat Mode

Use Powerboat mode when you are operating a boat with a motor. Powerboat mode focuses on Go To operation, meaning you can find an item and go to it. Powerboat mode is very similar to Sailboat mode.

Sailboat Mode

Use Sailboat mode when you are operating a sailboat. It focuses on route navigation: You can create a route and then navigate it later.

Automotive Mode

Use Automotive mode when you are driving an automobile on streets or highways. In Automotive mode, the 276C Plus automatically generates turn-by-turn routes to a specified location.

Off Road Mode

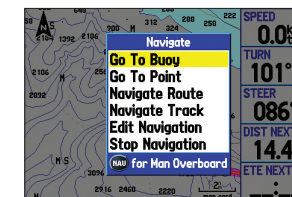
Use Off Road mode when you are driving an off-road vehicle, such as an ATV or snowmobile. The 276C Plus automatically generates routes to your selected destination, but the route will not follow roads.

How do I Switch Modes?

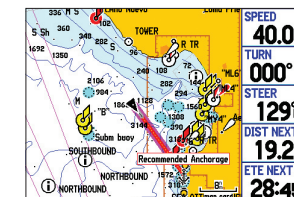
Press and hold the **PAGE/MODE** button. A window appears displaying the four modes. Use the **Rocker** key to highlight the mode you want to use and press **ENTER**.

To Go To a highlighted map item:

1. Use the **Rocker** key to highlight the item you want to navigate to on the Map page.
2. Press **NAV/MOB**, then press **ENTER**.
3. Follow the magenta route displayed on the Map page. You can also use the Compass page to help you navigate to the point.



Navigate Options with Map Feature highlighted



Your route displayed on the Map page.

To activate a Go To from the Find Menu:

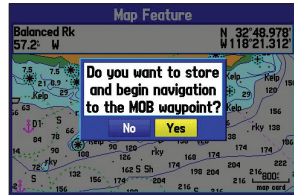
1. Press the **NAV/MOB** key.
2. Use the **Rocker** key to highlight **Go To Point** (or **New Route** when in Automotive mode) and press **ENTER**.
3. From the Find Menu, highlight **Waypoints** and press **ENTER**.
4. Select a waypoint from the search results list and press **ENTER**.
5. The Waypoint Review page automatically opens. With the **Go To** button highlighted, press **ENTER** to begin navigation.

Using the Man OverBoard Feature

The Man OverBoard (MOB) function lets you simultaneously mark and set a course to a position for quick response to emergency situations.

To activate the MOB function:

1. Press and hold the **NAV/MOB** key, or press the **NAV/MOB** key twice.
2. Press **ENTER/MARK** to confirm and begin navigating to the MOB position.



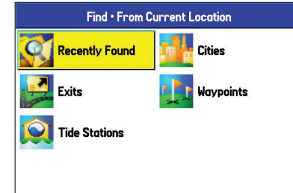
Man OverBoard confirmation screen

Once a MOB has been activated, an “MOB” waypoint with an international MOB symbol is created, and the unit begins actively navigating to that point. Use any of the navigation pages to guide you back to the MOB point. The MOB waypoint is stored in the waypoint list and may be deleted like any other waypoint.

Finding Items

To find a waypoint or other item from your current location:

1. From any page, press **FIND**.
2. Highlight the desired category from the list and press **ENTER**.
3. Highlight the desired item from the list and press **ENTER**.



Find Menu

| Item | Distance | Bearing |
|-----------------|----------|---------|
| Buoy | 347ft | 0.0% |
| Buoy | 347ft | 0.0% |
| Buoy | 086ft | 0.0% |
| Buoy | 065ft | 0.2% |
| Tks | 075ft | 0.8% |
| Radio Telescope | 034ft | 1.0% |
| Radio Telescope | 034ft | 1.0% |
| Tower | 035ft | 1.0% |
| Tower | 033ft | 1.0% |

Navaid search result list

To find an item from another location through the Find Menu:

1. From any page, press **FIND**.
2. Press **MENU**. Highlight **Near Other** and press **ENTER**.
3. Select a reference position on the map and press **ENTER**. The list changes to display items nearest to the new map position.

To find an item from another location through the Map Page:

1. From the Map page, use the **Rocker** key to pan to the desired location and press **FIND**.
2. Highlight the desired category from the list and press **ENTER**.
3. Highlight the desired item from the list and press **ENTER**.

Creating a Route

To create a route using the Find Menu:

1. Press the **MENU** key twice to display the Main Menu page.
2. Highlight **Route** from the vertical list of tabs.
3. Highlight the first available blank route slot and press **ENTER**.
4. Press **ENTER** to find items to add to the route.



Route Tab of the Main Menu

| Waypoint | Course | Distance | ETE |
|-----------|--------|----------|-----|
| Anchorage | 233ft | 0ft | --- |
| Waverider | --- | 12.9ft | --- |
| Total | 233ft | 12.9ft | --- |

Adding points to the route

To create a route graphically:

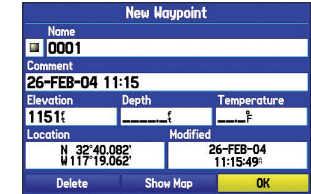
1. From the Route Tab of the Main Menu, highlight the first blank slot in the Route Tab and press **ENTER**.
2. On the Route Review page, press the **MENU** key to open the options menu.
3. Highlight **Edit on Map** and press **ENTER**.
4. Highlight the desired map item and press **ENTER**.
5. When finished, press **QUIT**.

When you are navigating a route, you can edit the route from the Navigate menu. Press the **NAV/MOB** key. Select **Edit Navigation** to add points to your route.

Marking a Waypoint

To mark your present position:

1. Press and hold the **ENTER/MARK** key until the New Waypoint page appears.
2. To change any information on the New Waypoint page, highlight the appropriate field and press **ENTER/MARK**.
3. After entering and confirming your changes, highlight **OK** and press **ENTER/MARK**.



New Waypoint Page

To create a new waypoint using the Map Page:

1. Press **PAGE** or **QUIT** until the Map page is displayed.
2. Move the arrow to the desired map position or map feature.
3. Press and quickly release the **ENTER/MARK** key to capture the arrow's position.
4. To change any information on the New Map Waypoint page, highlight the appropriate field and press **ENTER/MARK**.
5. After entering and confirming your changes, highlight **OK** and press **ENTER/MARK**.