

# ULTREX™

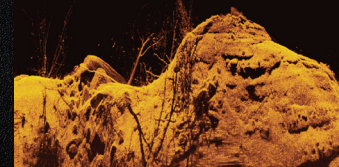


ONE-BOAT  
NETWORK™



## IT'S ALL IN. ARE YOU?

Ultrax can take a boat anywhere – and keep it there. It features Power Steering, which takes cable steer control to the next level. And Spot-Lock, the most accurate GPS anchor ever.



### POWER STEERING

The same heel/toe steering you're used to, made easier. Power Steering reduces steering effort and foot fatigue, making Ultrax the smoothest, most responsive motor you've ever driven.

### STEERING LOCK

When you take your foot off Ultrax's foot pedal, the motor head remains pointed in the direction you left it. No recoil or readjustment, just easier steering every day.



### i-PILOT® OR i-PILOT® LINK™

Ultrax includes your choice of i-Pilot or i-Pilot Link, plus a heading sensor that enables Jog.



### BUILT-IN MEGA DOWN IMAGING®

Humminbird® MEGA Down Imaging technology built right into the motor. Providing the clearest images and no extra rigging.



### UNIVERSAL SONAR 2

Keep your built-in 2D transducer and wiring completely concealed and protected, running everything through the motor's shaft.



### LIFT-ASSIST

Cuts the weight of stow and deploy in half, making it as easy as lifting your SUV tailgate.



### ULTREX FOOT PEDAL

Power steering and all-day comfort with instant responsiveness. Along with Spot-Lock, for dead-on accurate automatic GPS anchoring.



112  
POUNDS OF  
THRUST



### THRUST LEVELS

80lbs, 112lbs

### SHAFT LENGTHS

45", 52", 60"