



Owner's Manual

12 Volt DC Glare Free Halogen Spotlight

Dry Location Use Only




WARNING

TO PREVENT DAMAGE TO EYESIGHT, NEVER LOOK INTO LIGHT WHEN LIGHT IS ON. DO NOT SHINE LIGHT INTO THE FACE OF SOMEONE ELSE.

WARNING

READ AND FOLLOW ALL WARNINGS AND INSTRUCTIONS IN THIS MANUAL TO AVOID PERSONAL INJURY OR PROPERTY DAMAGE.

IMPORTANT SAFETY WARNINGS

 READ AND FOLLOW ALL SAFETY WARNINGS AND INSTRUCTIONS IN THE OWNER'S MANUAL BEFORE OPERATING LIGHT.

WARNING

- Never place light face down when light is on or is still hot from recent use. Doing so could burn/ignite surfaces such as carpeting, etc. and cause major property damage. Always turn light off and unplug from power source when not in use.
- To prevent serious damage to eyesight, never look into light when light is on. Do not shine light into the face of others.
- Do not touch lens of light when light is on or if it was recently on. The lens will be hot and could cause serious burns.
- Keep battery clips or DC plug dry and out of water at all times. Dry location use only.
- Do not place light in water.
- Do not allow children to handle or operate this light.
- Do not use this product for other than its intended use.
- Do not operate in close proximity of combustible or flammable materials.
- Do not attempt to operate light if cord, plug, bulb or any part of the light is damaged or corroded.



USE CAUTION AND COMMON SENSE WHEN OPERATING YOUR LIGHT.



FAILURE TO ADHERE TO THE SAFETY WARNINGS AND GUIDELINES IN THIS MANUAL COULD RESULT IN BODILY INJURY OR PROPERTY DAMAGE.

SAVE THIS MANUAL FOR FUTURE REFERENCE.

Tips to Avoid Damage to Your Light

- Never attempt to wipe or clean the inner reflective surface of the reflector. Touching or wiping the surface will damage it permanently.
- The lens is made of optical-quality, tempered glass. As with all glass, avoid dropping or sharp impact on light.
- Do not allow the hot lens to come in contact with water or materials subject to heat damage.
- This light is not waterproof. Do not use the light under water or store outdoors.
- Only use a 12-volt, halogen bulb that is designed for your light. Use of any other bulb may result in poor performance and may damage your light.
- After months of use, DC receptacles can build up corrosion that may prevent your light from making good contact. It may be necessary to clean the inside of your DC receptacle with a fine emery cloth. Before cleaning receptacle, remove the fuse to prevent it from shorting out.

OPERATING INSTRUCTIONS

⚠ READ AND FOLLOW ALL SAFETY WARNINGS AND INSTRUCTIONS IN THE OWNER'S MANUAL BEFORE OPERATING LIGHT.

Step 1: To activate light, plug the DC adapter into a DC receptacle. Move switch to ON.

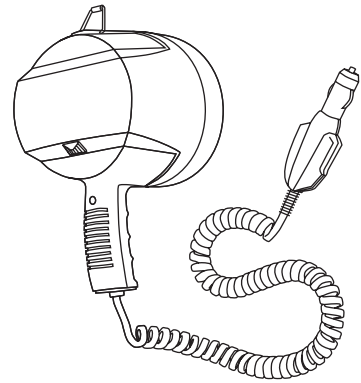
⚠ WARNING: Never place light face down when light is on or is still hot from recent use. Doing so could burn/ignite surfaces such as seats, carpeting, etc. and cause major property damage. Always turn light off and unplug from power source when not in use.

Step 2: To deactivate, move switch to OFF and unplug from power source.

Only use a halogen bulb that is designed for the light as a replacement. Use of any other bulb may result in poor performance and may damage your light.

IMPORTANT: Do not touch the glass part of bulb with fingers as natural oils affect the life and performance of bulb. Handle bulb by metal end only.

- Step 1: Disconnect light from power source.
- Step 2: Remove the two screws from top and bottom of front housing (see Figure 1).
- Step 3: Lay the light face (lens) down on a flat surface.
- Step 4: Holding the front housing secure, slowly lift the rear housing off.
- Step 5: Pull reflector away from rear housing being careful not to pull wire connections inside. Do not touch the inside of reflector.
- NOTE:** The glass lens is not attached to front housing. Use care when disassembling to avoid breaking lens.



To Replace Bulb

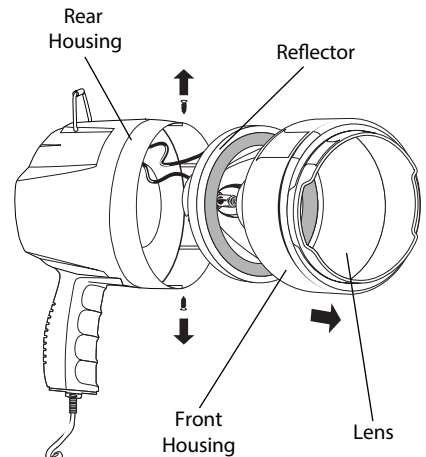


FIGURE 1

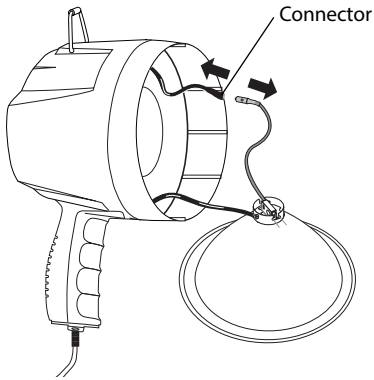


FIGURE 2

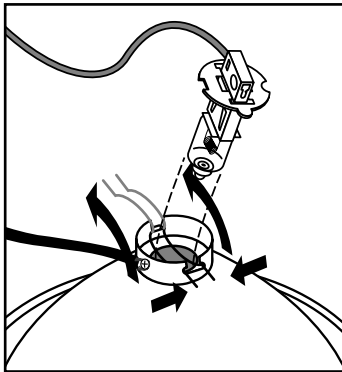


FIGURE 3

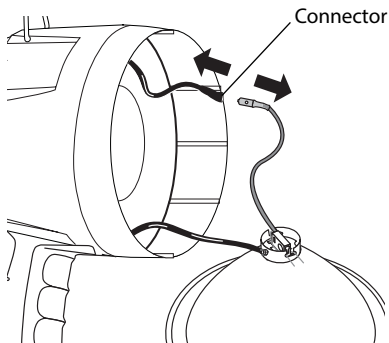


FIGURE 4

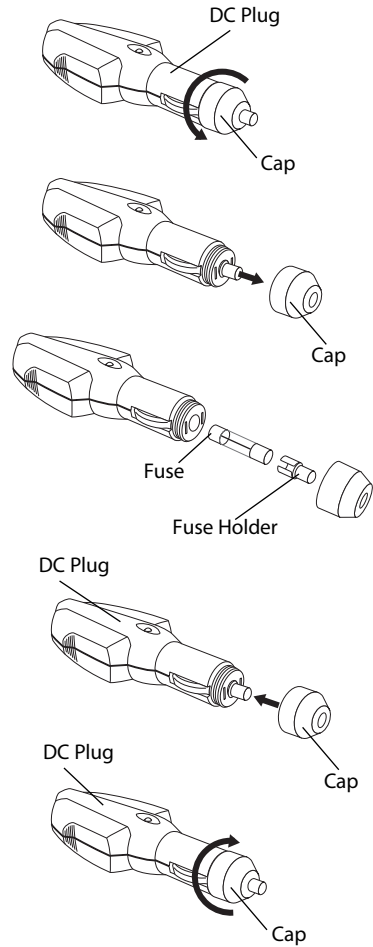
- Step 6: Disconnect bulb wire from connector by holding the connector firmly with fingers then pulling bulb wire straight out as shown in Figure 2.
- Step 7: Pinch the ends of the wire retainer together and lift up as illustrated (Figure 3).
- Step 8: Pull bulb straight out from the reflector mounting plate.
- Step 9: Disconnect bulb wire from connector by holding the connector firmly with fingers then pulling bulb wire straight out.
- Step 10: To install new bulb, grasp the bulb from the metal end (DO NOT TOUCH THE GLASS PART) and insert into the reflector mounting plate. Align the slots in the bulb base with those in the reflector mounting plate.
- Step 11: Replace wire retainer by pinching ends together while pressing down. Push ends apart so they catch on the reflector mounting plate.
- Step 12: Reconnect the bulb wire to the connector as illustrated in Figure 4.
- Step 13: To reassemble, place the front housing face (lens) down on a flat surface. Set the reflector into housing. Insert the rear housing into the front housing of the light.
- Step 14: Replace the two screws that were removed in Step 2. Do not over tighten screws.

- Step 1: Disconnect light from power source.
- Step 2: Unscrew cap of DC plug and pull straight away from fuse.
- Step 3: Pull fuse holder and fuse out of DC plug. Observe to see if fuse is burned out.

Note: Use a 10A fuse only. Fuse is burned out when fuse element is missing or broken inside glass tube. Replace with new 10A fuse if fuse element is missing or broken.

- Step 4: Pull fuse out of fuse holder. Insert new fuse into holder.
- Step 5: Insert fuse holder and fuse into DC plug.
- Step 6: Screw cap onto DC plug.

To Replace Cigarette DC Plug Fuse



1-YEAR LIMITED WARRANTY (Page 1 of 2)

What Does This Limited Warranty Cover?

West Marine warrants to the original retail purchaser of the West Marine product, where the purchase is made in the United States, that the product will be free from defects in materials and craftsmanship with only the limitations or exclusions set out below.

How Long Does This Limited Warranty Last?

This limited warranty is valid for twelve months from the date of the original retail purchase from West Marine within the United States (the "Limited Warranty Term").

The warranty period is not extended if we repair or replace a warranted product or any parts. West Marine reserves the right to change the availability of limited warranties, at its discretion, but any changes will not be retroactive and will only apply to subsequent purchases.

What Does This Limited Warranty Not Cover?

This limited warranty does not cover:

- Normal maintenance items or normal wear and tear.
- Problems resulting from fire.
- If the product was damaged, modified or altered by you.
- If the product was used as part of any conversion kits, subassemblies, or any configurations not appropriate or contemplated for this product or its use.
- If damage or loss occurring during return shipment of the product to West Marine or its authorized service representative.
- If the product was subject to improper service, repair, installation, storage, maintenance, alteration or application.
- Problems that result from accident, neglect, abuse, misuse or issues with electrical power.
- Problems caused by accessories, parts or components added to the product that are not appropriate for this product or its use.

THIS LIMITED WARRANTY GIVES YOU SPECIFIC LEGAL RIGHTS, AND YOU MAY ALSO HAVE OTHER RIGHTS WHICH VARY FROM STATE TO STATE (OR JURISDICTION TO JURISDICTION). WEST MARINE'S RESPONSIBILITY FOR MALFUNCTIONS AND DEFECTS IN HARDWARE IS LIMITED TO REPAIR OR REPLACEMENT AS SET FORTH IN THIS WARRANTY STATEMENT. ALL EXPRESS AND IMPLIED WARRANTIES FOR THE PRODUCT INCLUDING, BUT NOT LIMITED TO, ANY IMPLIED WARRANTIES AND CONDITIONS OF MERCHANTABILITY AND FITNESS FOR A PARTICULAR PURPOSE, ARE LIMITED IN TIME TO THE LIMITED WARRANTY TERM (AS SPECIFIED ABOVE). NO WARRANTIES, WHETHER EXPRESS OR IMPLIED, WILL APPLY AFTER THE LIMITED WARRANTY TERM HAS EXPIRED. SOME STATES DO NOT ALLOW LIMITATIONS ON HOW LONG AN IMPLIED WARRANTY LASTS, SO THE ABOVE LIMITATIONS MAY NOT APPLY TO YOU.

WE DO NOT ACCEPT LIABILITY BEYOND THE REMEDIES PROVIDED FOR IN THIS LIMITED WARRANTY OR FOR CONSEQUENTIAL OR INCIDENTAL DAMAGES INCLUDING, WITHOUT LIMITATION, ANY LIABILITY FOR THIRD-PARTY CLAIMS AGAINST YOU FOR DAMAGES, FOR PRODUCTS NOT BEING AVAILABLE FOR USE, FOR PERSONAL INJURY AND/OR FOR LOST PROPERTY, DATA OR SOFTWARE. OUR LIABILITY AND THE MAXIMUM AMOUNT FOR WHICH WE ARE RESPONSIBLE WILL BE NO MORE THAN THE AMOUNT YOU PAID FOR THE PRODUCT THAT IS THE SUBJECT OF A CLAIM. SOME STATES DO NOT ALLOW THE EXCLUSION OR LIMITATION OF INCIDENTAL OR CONSEQUENTIAL DAMAGES, SO THE ABOVE LIMITATION OR EXCLUSION MAY NOT APPLY TO YOU.

1-YEAR LIMITED WARRANTY (Page 2 of 2)

What Must I Do To Keep the Warranty in Effect?

- You must keep your receipt or other appropriate documentation as proof of the date of sale and purchase.
- You must keep your serial number or order number for the product. This is found on the product itself or on your receipt.
- You must not do any of the things that will make the warranty invalid as provided for in this warranty statement.
- You must use, install, maintain and operate the product in accordance with published specifications and the user's manual.

What Do I Do If I Need Warranty Service?

- Before the warranty expires, please call us at 1-800-BOATING. Please also have your West Marine serial number or order number available.
- When you contact us, we will issue a Return Material Authorization Number for you to include with your return. We will also provide you the address of where to ship the product.
- You must return the product to us in its original or equivalent packaging, prepay shipping charges, and insure the shipment or accept the risk if the product is lost or damaged in shipment.

What Will West Marine Do?

During the Limited Warranty Term, if the product you return to us proves to be defective in materials or workmanship and not for the reasons which would otherwise disqualify it (as explained above), we will:

- Repair the product or, if we are unable to repair it, replace it with a comparable product that is new or refurbished;
- Or, as an alternative, at West Marine's option, we will refund you the original purchase price;
- If we repair or replace the product, we will return the repaired or replacement product to you; and
- Pay to ship the repaired or replacement product to you if you use an address in the United States (excluding Puerto Rico and U.S. possessions and territories). Otherwise, we will ship the product to you freight collect.

If we determine that the problem is not covered under this warranty, we will notify you of this when we return your product to you to the address you provide us in the United States (excluding Puerto Rico and U.S. possessions and territories).

We use new and refurbished parts made by various manufacturers in performing warranty repairs and in building replacement parts and systems. Refurbished parts and systems are parts or systems that have been returned to West Marine, some of which were never used by a customer. Replacement parts and systems are covered for the remaining time left in the Limited Warranty Term for the product you bought. West Marine owns all parts removed from repaired products.

Maintenance is the Owner's Responsibility

Cleaning, polishing, lubricating, replacing filters, tuning, replacing worn parts, using your purchased product according to the user's manual, and regularly maintaining your purchased product is your responsibility.

What if I purchased a Plus Protection Plan?

Service will be provided to you under the terms of the Plus Protection Plan contract. Please refer to that contract for details on how to obtain service.

How State Law Relates to the Warranty.

This warranty gives you specific legal rights, and you may also have other rights which vary from state to state.



500 Westridge Dr., Watsonville, CA 95076 Made in China, Fabriqué en Chine
www.westmarine.com



Owner's Manual for
Model 17335084