

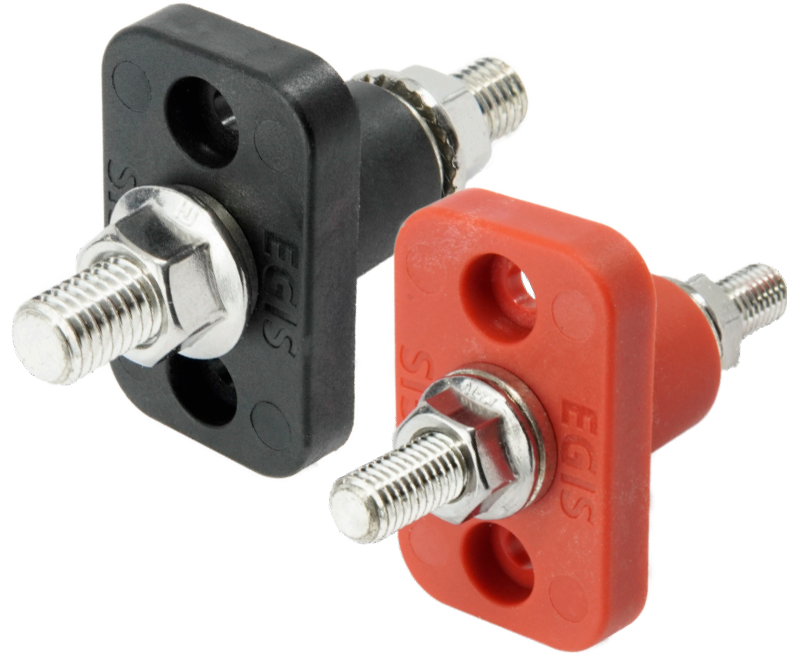
Transfers High Current Power through bulkhead walls and decks. Base surface supports full sealing via bedding compound or customer supplied gasket

Robust Design with Insert molded conductors and glass-filled composite insulators

Outboard Motor Cable Connections made simple with two size and color options, M8 (5/16") & M10 (3/8") variations ensuring the correct voltages / polarities are matched

Stainless Steel Self Locking Hardware Ensures long term reliability and ease of installation

Tin Plated Copper Conductors deliver superior electrical performance with minimal voltage drop



Related Product: Power Post Plus

Related Product: Mini Power Posts



P/N: 6012-310B

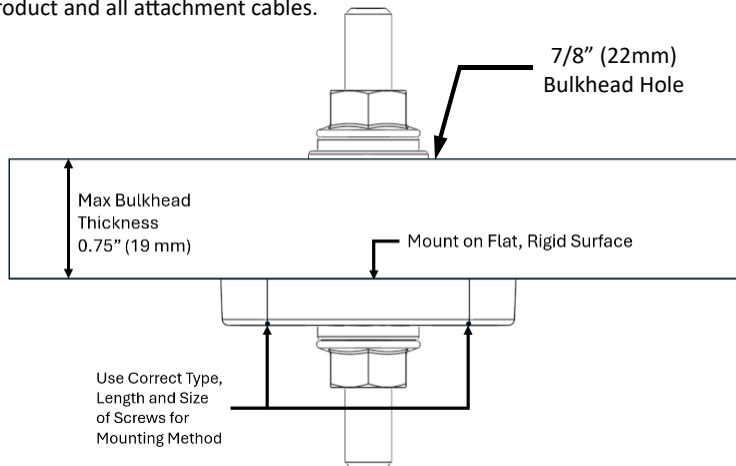


P/N: 6011-01B

Installation Guidelines

- * DISCONNECT BATTERY FROM POWER DISTRIBUTION SYSTEM BEFORE INSTALLING PRODUCT TO PREVENT ELECTRICAL SHOCK OR FUSE DAMAGE
- * INSTALLER / MANUFACTURE IS RESPONSIBLE AND FULLY LIABLE FOR ENSURING THIS PRODUCT IS INSTALLED IN A MANNER THAT WILL NOT EXCEED THE PRODUCT'S SPECIFICATION
- * FOLLOW AMERICAN BOAT AND YACHT COUNCIL (ABYC) OR OTHER RELEVANT GUIDELINES FOR SELECTING AND INSTALLING THIS PRODUCT TO MEET YOUR APPLICATION

(1) Mount product on a flat surface with sufficient rigidity to support the product and all attachment cables.



(2) Use the appropriate screw type (machine/thread cutting), size (match with pilot or through-hole diameter), and length; ensuring that the weight of the product and associate cables will be properly secured.

(3) Assemble input and output cables to external studs to meet application requirements. Check cable cap fit, and then torque cable terminal nuts to target specification level.

(4) Complete assembly of cable caps to base. A common best practice is to split cable cap along its length and then wrap around top cable(s) and wire tie cap to the cable(s).

(5) Strain relief cables to a fixed mounting surface and/or other cables to stop cable weight and system shock/vibration from loosening attachment nuts. Follow minimum strain relief distances per applicable industry standards.

(6) Perform system-level validation in worst-case conditions ensuring maximum cable/terminal temperatures are not exceeded.

Related Products - Dual Power Posts



P/N: 6020-034B

Specifications

Maximum Voltage (Vdc)	80 Vdc
Maximum Amperage	250 A
Mounting Screw Max Torque	50 in-lbs (5.5 N-m)
M8 Nut Recommended Torque	100 in-lbs (11.3 N-m)
M8 Nut Maximum Torque	120 in-lbs (13.6 N-m)
M10 Nut Recommended Torque	120 in-lbs (13.6 N-m)
M10 Nut Maximum Torque	140 in-lbs (15.8 N-m)
Bulkhead Hole Mount Diameter	7/8" (22mm)
Cover Material (if applicable)	Clear Polycarbonate
Base Material	Nylon 6 30% GF
Operating Ambient Temperature Range	-40 C to 125 C
Max Storage/Shipping Temperatures	-50 C to 140 C
Busbar Material (power post plus)	Tin Plated Copper
Ingress Protection Rating (Customer required to seal cut-out)	IP66 / IP67 / IP6K9K

Related Products - Power Posts



P/N: 6013-03B

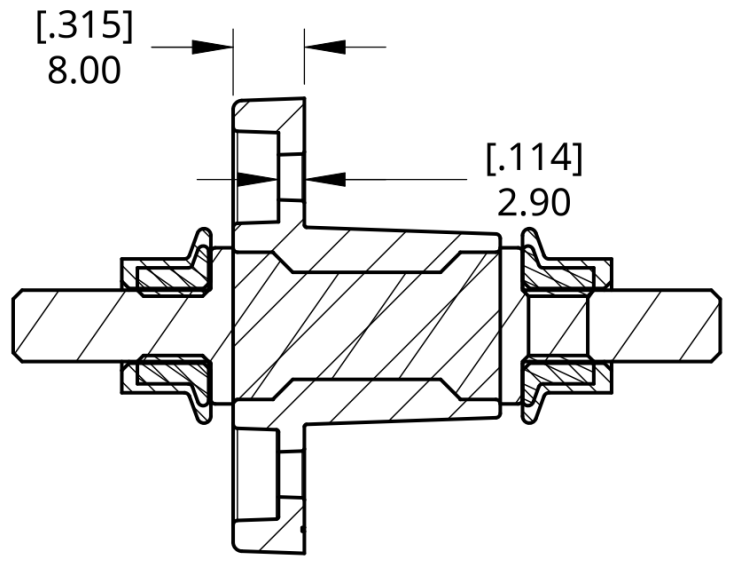
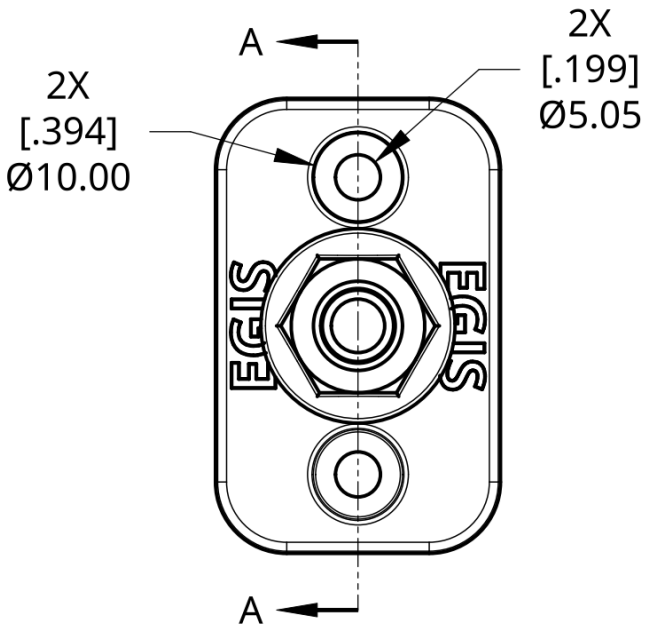
Part Numbers	Resell Pack	Bulk Pack
Feed Through Term-M8 (5/16") - Black	6250-130	6250-130B
Feed Through Term-M10 (3/8") - Black	6250-140	6250-140B
Feed Through Term-M8 (5/16") - Red	6250-131	6250-131B
Feed Through Term-M10 (3/8") - Red	6250-141	6250-141B

Related Part Numbers	Resell Pack	Bulk Pack
Mini Power Post , M5 (#10)	6011-01	6011-01B
Mini Power Post , M6 (1/4")	6011-02	6011-02B
Power Post , M8 (5/16")	6012-03	6012-03B
Power Post , M10 (3/8")	6012-04	6012-04B
Power Post Plus,M8(5/16")+10xM4(#8)	6012-310	6012-310B
Power Post Plus,M10(5/16")+10xM4(#8)	6012-410	6012-410B
Dual Power Post , 2xM8 (5/16")	6020-33	6020-33B
Dual Power Post , 2xM10 (3/8")	6020-44	6020-44B
Dual Power Post,M8/M10 (5/16"/)(3/8")	6020-34	6020-34B

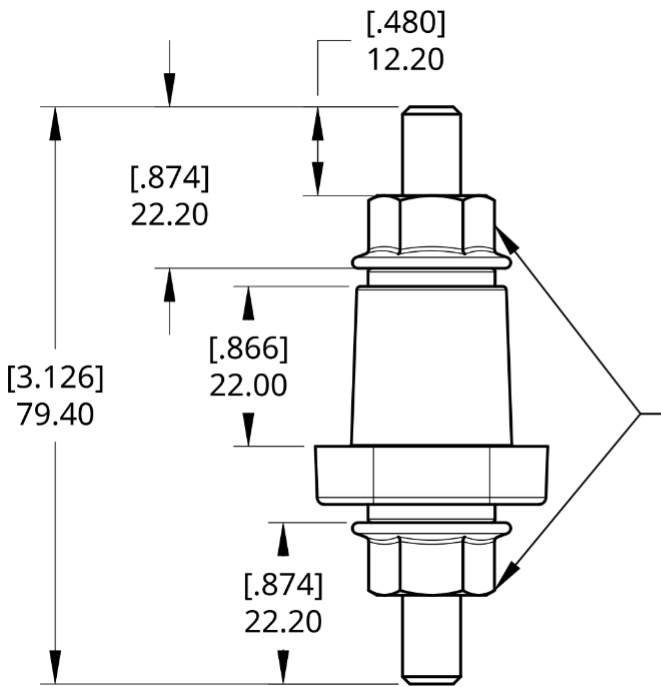
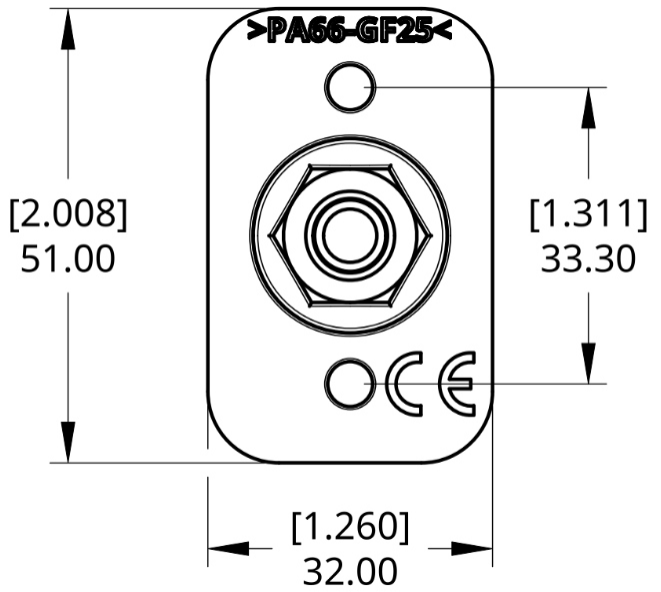


www.egismobile.com
360.768.1211
Bellingham, WA U.S.A





SECTION A - A



6250-13x : M8-1.25 THREADED STUDS AND SERRATED FLANGE NUTS USE WITH 5/16" (M8) WIRE RING TERMINALS

6250-14x : M10-1.5 THREADED STUDS AND SERRATED FLANGE NUTS, USE WITH 3/8" (M10) WIRE RING TERMINALS