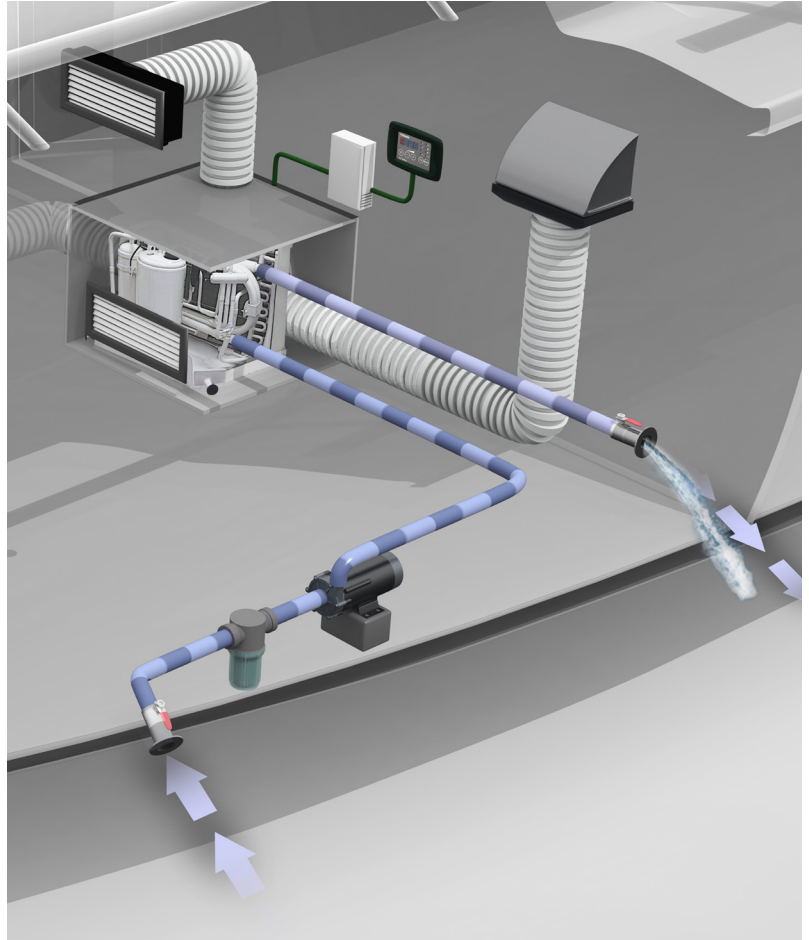


## FCF Platinum | Product Features + Installation

- Long and slim new footprint featured on the 12,000 and 16,000 BTU/h models - allowing for easy replacement of existing units
- Engineered for better performance with a higher BTU/h rating across a variety of ambient scenarios
- Digital display, controller and cable comes standard
- 2-year warranty with unmatched product reliability
- Marine-grade stainless steel frame for durability and longevity
- Proprietary compressor - well balanced and quiet than ever before
- Low cost replacement parts



## Accessories | KoolAir Pumps

Webasto is the North American exclusive distributor of KoolAir Pumps to the marine industry.

- Three pumps available; PM500, PM1000 and TPM1000
- PM500 is a FULLY submersible pump
- Run Dry and Thermal Overload Protection
- All are available in 115 and 230V
- Motors are rated as: continuous duty
- One phase pumps



Webasto Thermo & Comfort  
North America, Inc.

15083 North Road  
Fenton, Michigan 48430  
USA

Toll Free: 800-860-7866  
Phone: 810-593-6000

[webasto.com](http://webasto.com)

# ALL-NEW FCF Platinum

Self-Contained Air Conditioning Series

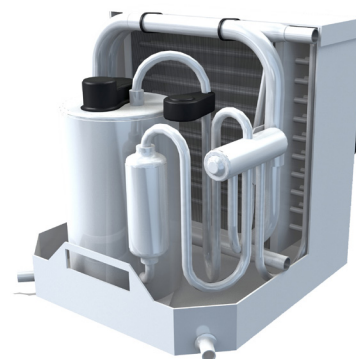




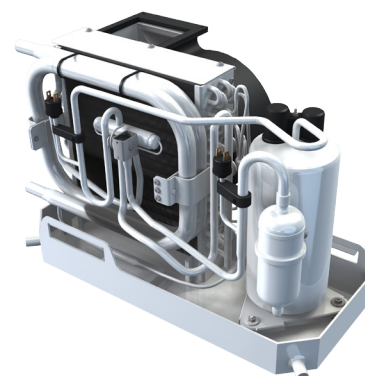
# Platinum is the new standard.

The all-new FCF Platinum series is the latest development in Webasto's line of marine comfort solutions. The FCF Platinum features improved design, offering a higher BTU/h rating across a variety of ambient scenarios, while still providing unmatched product reliability and a two-year warranty.

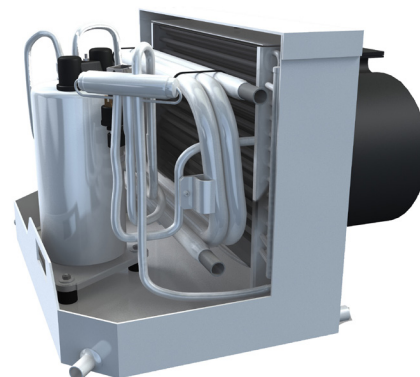
FCF 6,000	Rated Voltage	115V	230V
	Part Number	5011394A	5011395A
	Cooling Capacity	6,000 BTU/h	
	Heating Capacity	6,000 BTU/h	
	Rated Frequency	60Hz	50 / 60Hz
	Rated Current (C/H)	4.7 / 4.5 A	2.4 / 2.4A
	Refrigerant Charge	R410A (0.35kg)	
	Comp. LRA	21A	14A
	Min. Condenser Water Flow	1.06 Gal/Min. (4 L/Min.)	
	Dimensions (L x W x H)	11.2 x 16 x 11.6 in (285 x 408 x 295 mm)	
	Weight	53 lbs (24kg)	



FCF 12,000	Rated Voltage	115V	230V
	Part Number	5011398A	5011399A
	Cooling Capacity	12,000 BTU/h	
	Heating Capacity	13,000 BTU/h	
	Rated Frequency	60Hz	50 / 60Hz
	Rated Current (C/H)	10 / 10A	4.6 / 5.0A
	Refrigerant Charge	R410A (0.5kg)	
	Comp. LRA	47A	27A
	Min. Condenser Water Flow	2.77 Gal/Min. (10.5 L/Min.)	
	Dimensions (L x W x H)	21.6 x 13.1 x 12.5 in (549 x 330 x 320 mm)	
	Weight	72 lbs (33kg)	



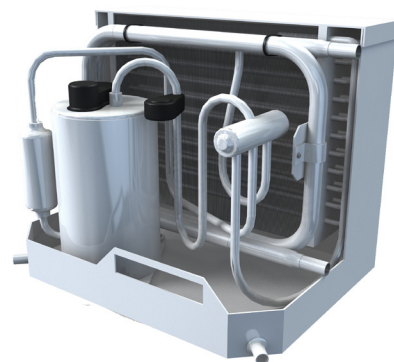
FCF 20,000	Rated Voltage	230V
	Part Number	5011402A
	Cooling Capacity	20,000 BTU/h
	Heating Capacity	20,000 BTU/h
	Rated Frequency	50 / 60Hz
	Rated Current (C/H)	7.4 / 7.5A
	Refrigerant Charge	R410A (0.85kg)
	Comp. LRA	44A
	Min. Condenser Water Flow	5.02 Gal/Min. (19 L/Min.)
	Dimensions (L x W x H)	20.8 x 23.4 x 15 in (529 x 595 x 386 mm)
	Weight	121 lbs (55kg)



» New SLIM Footprint

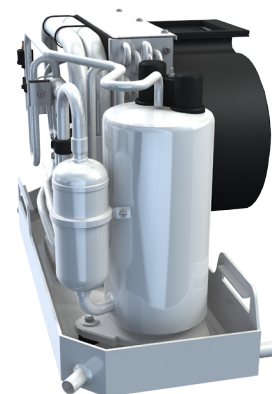
## FCF 10,000

Rated Voltage	115V	230V
Part Number	501136A	5011397A
Cooling Capacity	10,000 BTU/h	
Heating Capacity	10,000 BTU/h	
Rated Frequency	60Hz	50 / 60Hz
Rated Current (C/H)	7.2 / 8A	3.7 / 3.7A
Refrigerant Charge	R410A (0.45kg)	
Comp. LRA	34A	17A
Min. Condenser Water Flow	1.59 Gal/Min. (6 L/Min.)	
Dimensions (L x W x H)	15 x 16 x 12.2 in (380 x 408 x 310 mm)	
Weight	60 lbs (27kg)	



## FCF 16,000

Rated Voltage	115V	230V
Part Number	5011400A	5011401A
Cooling Capacity	16,000 BTU/h	
Heating Capacity	16,200 BTU/h	
Rated Frequency	60Hz	50 / 60Hz
Rated Current (C/H)	11.2 / 12.8A	5.6 / 5.6A
Refrigerant Charge	R410A (0.7kg)	
Comp. LRA	60A	35A
Min. Condenser Water Flow	3.43 Gal/Min. (13 L/Min.)	
Dimensions (L x W x H)	24.3 x 13.5 x 13 in (619 x 343 x 330 mm)	
Weight	88 lbs (40kg)	



## FCF 25,000

Rated Voltage	230V
Part Number	5011403A
Cooling Capacity	25,500 BTU/h
Heating Capacity	25,900 BTU/h
Rated Frequency	50 / 60Hz
Rated Current (C/H)	8.0 / 9.3 A
Refrigerant Charge	R410A (0.95kg)
Comp. LRA	52A
Min. Condenser Water Flow	6.34 Gal/Min. (24 L/Min.)
Dimensions (L x W x H)	20.8 x 23.4 x 15 in (529 x 595 x 386 mm)
Weight	132 lbs (60kg)

